



**Organiser of the 40<sup>th</sup> International Flower Exhibition and**



**expert sponsor of the competition**

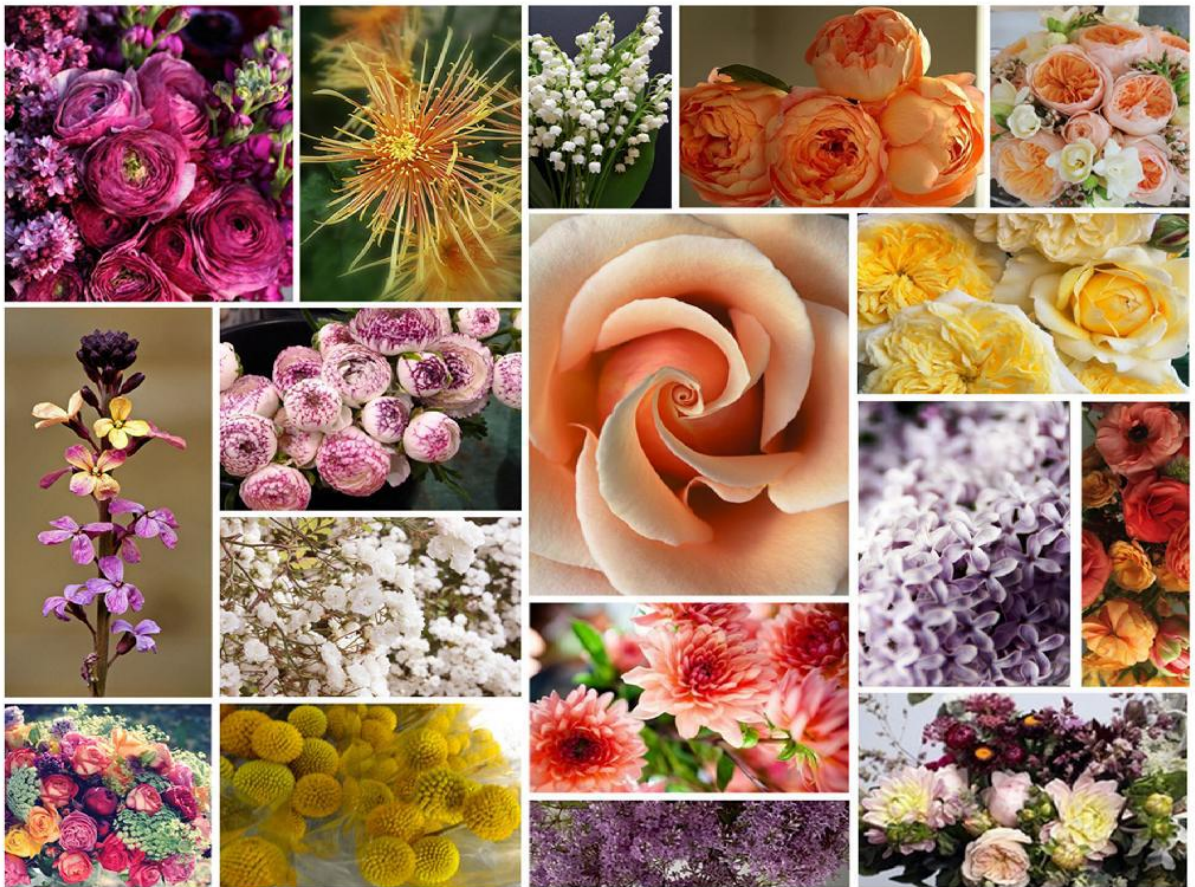
**invite you to the 24<sup>th</sup> Flower Arranging Competition**



|                             |  |
|-----------------------------|--|
| <b>Date</b>                 | 4. 4. 2019   |
| <b>Place</b>                | Flóra Bratislava 2019, Exhibition and Congress Centre Incheba, Viedenská no. 7, Hall B |
| <b>Presentation</b>         | 11:00  |
| <b>Start of competition</b> | 11:30  |
| <b>Break</b>                | 14:00 – 30 minutes   |

|                                |  |
|--------------------------------|--|
| <b>Organiser's information</b> | <p><u>Deadline for registering is 1 March 2019.</u><br/>Application should be sent to:<br/><b>Kulla, Trnavská cesta 110/B, 821 01 Bratislava or <a href="mailto:info@kulla.eu">info@kulla.eu</a></b><br/>The number of competitors is unlimited.<br/>The competition entries will be exhibited during Flóra Bratislava 2019; therefore the competitors are obliged to provide works throughout the exhibition. Own props used in flower arrangements may be picked up by competitors within 7 days following the end of the exhibition at the garden centre KULLA, Trnavská Road no. 100 in Bratislava. For more information call: 02/4341 3329, 0903 438 433, or write to: <a href="mailto:flora@kulla.eu">flora@kulla.eu</a><br/>The organiser may cancel a given category in the event that too few competitors register for that category.</p> |
| <b>Results</b>                 | Results will be announced and an award ceremony for the top three works will take place on 4 April 2019 at 20:00 in the Exhibition and Congress Centre Incheba. The winners will receive attractive prizes and their works will be exhibited to the public at the Flóra Bratislava 2019 flower exhibition.   |
| <b>Categories</b>              | <p><b>JUNIOR</b> – students of secondary horticultural schools and vocational schools without age limit<br/><b>SENIOR</b> – professional florists, garden centre and flower shop employees, university students</p>  |
| <b>Jury</b>                    | A professional jury and technical panel will comprise professionals from the area of floriculture  |
| <b>Evaluation criteria</b>     | <p>Competitors participate under the numbers drawn in the presence of the public.<br/>Entered works will be evaluated according to the system of the European Federation of Professional Florists' Associations FLORINT.<br/>Further information on evaluation and jury members will be sent to all applicants in March.</p>   |
| <b>Questions and answers</b>   | For questions concerning the topics please write to <a href="mailto:info@sakf.sk">info@sakf.sk</a> , where the questions will be collected and replied to in bulk by email. Questions and answers will be sent to all competitors on two different dates. The first set of answers will be sent on 3 March 2019, the second set of answers will follow on 17 March 2019. After that date no more questions will be answered!   |
| <b>Promotion</b>               | <p>The competitor guarantees the organiser the right to irrevocably, permanently and use photos free-of-charge, including their reproduction, editing, displaying and publishing thereof and other use of competition entries in all media and worldwide. The right includes any change to the photo size, cropping, compression, editing, editing a title, logo or other adjustments. The taking of photos of competition entries does not establish any right for the competitor to any remuneration, royalties or any other claims of any nature whatsoever. This also applies to any other use of photos by the organiser.<br/>Use of mobile phones during the competition is strictly prohibited!</p>   |

# FLOWER OF FLÓRA



Each of the 40 years of the FLÓRA Bratislava flower exhibition has been characterised by a particular flower. For this jubilee we have drawn inspiration from the theme for the 24<sup>th</sup> FLÓRA Cup competition.

We hope you find inspiration in them and create works fizzing with beauty.

(Photo for illustration purposes only.)

# COMPETITION THEMES

|                     |  |                 |              |
|---------------------|--|-----------------|--------------|
| <b>Topic 1</b>      | <b>BOUQUET</b>   | <b>Start at</b> | <b>11:30</b> |
| <b>Category</b>     | junior, senior   |                 |              |
| <b>Objective</b>    | create a bouquet with at least one type of the FLÓRA Bratislava flowers (see annex)  |                 |              |
| <b>Style</b>        | loosely bound<br>shape and size – any  |                 |              |
| <b>Materials</b>    | participants will bring their own plants, aids, props, etc.  |                 |              |
| <b>Preparation</b>  | participants will provide a suitable container for their bouquet, plant materials may be prepared in advance (cut, cleaned, not wired) |                 |              |
| <b>Working time</b> | <b>45 minutes</b>  |                 |              |

|                     |   |                 |              |
|---------------------|---|-----------------|--------------|
| <b>Topic 2</b>      | <b>WEDDING BOUQUET</b>  | <b>Start at</b> | <b>12:30</b> |
| <b>Category</b>     | junior, senior  |                 |              |
| <b>Objective</b>    | create a wedding bouquet with at least one type of the FLÓRA Bratislava flowers (see annex)   |                 |              |
| <b>Style</b>        | insertion into a bouquet holder   |                 |              |
| <b>Materials</b>    | participants will bring their own plant materials, aids, props, etc. including a bouquet holder or base to display their bouquet. The selection of plant materials must last at least 24 hours. |                 |              |
| <b>Preparation</b>  | plant materials may not be prepared in advance in a different way, construction is allowed. More than 50% of the work must be performed during the competition.                                 |                 |              |
| <b>Working time</b> | <b>90 minutes</b>   |                 |              |

|                     |   |                 |              |
|---------------------|---|-----------------|--------------|
| <b>Topic 3</b>      | <b>SCREEN</b>   | <b>Start at</b> | <b>14:30</b> |
| <b>Category</b>     | junior, senior  |                 |              |
| <b>Objective</b>    | create a flower screen for a wedding photo shoot. A condition is to use at least one type of the FLÓRA Bratislava flowers.<br>(see annex) |                 |              |
| <b>Style</b>        | any<br>shape – any<br>minimum size 150x200cm  |                 |              |
| <b>Materials</b>    | participants will bring their own plant materials, aids, props, etc.  |                 |              |
| <b>Preparation</b>  | plants may not be prepared in advance in a different way, construction is allowed. The screen must be portable.                           |                 |              |
| <b>Working time</b> | <b>45 minutes</b>   |                 |              |

|                     |  |                 |              |
|---------------------|--|-----------------|--------------|
| <b>Topic 4</b>      | <b>TABLE DECORATION</b>  | <b>Start at</b> | <b>15:30</b> |
| <b>Category</b>     | senior   |                 |              |
| <b>Objective</b>    | create a decoration – wedding table decorations containing at least one type of the FLÓRA Bratislava flowers (see annex)   |                 |              |
| <b>Style</b>        | any  |                 |              |
| <b>Materials</b>    | participants will bring their own plant materials, aids, props, etc.<br>Table, chairs, tablecloths, chair covers as well as tableware will be provided by the organiser. Table size: |                 |              |
| <b>Preparation</b>  | plant materials or the construction may not be prepared in advance.  |                 |              |
| <b>Working time</b> | <b>60 minutes</b>  |                 |              |

Annex: FLOWER OF FLÓRA – history

|   |                                 |
|---|---------------------------------|
| <b>1966</b> Gerbera                         | <b>2004</b> Medinilla magnifica |
| <b>1968</b> Strelitzia reginae              | <b>2005</b> Anthurium           |
| <b>1970</b> Alstroemeria                    | <b>2006</b> Wollemi pine        |
| <b>1972</b> Protea                          | <b>2007</b> Paeonia lactifolia  |
| <b>1974</b> Heliconia                       | <b>2008</b> Gloriosa            |
| <b>1976</b> Phaeoemeria magnifica           | <b>2009</b> Ranunculus          |
| <b>1978</b> Bratislava tulip                | <b>2010</b> Grevillea           |
| <b>1980</b> Impatiens hybrida               | <b>2011</b> Haemanthus          |
| <b>1982</b> Gardenia jasminoides            | <b>2012</b> Dendrobium          |
| <b>1984</b> Bouwardia hybrida               | <b>2013</b> Lisianthus          |
| <b>1986</b> Anemone hybrida                 | <b>2014</b> Eucharis            |
| <b>1988</b> Nerine bowdenii                 | <b>2015</b> Kalanchoe           |
| <b>1991</b> Ornithogalum                    | <b>2016</b> Sandersonia         |
| <b>1993</b> Heliconia rostrata              | <b>2017</b> Delphinium          |
| <b>1994</b> Dallas rose                     | <b>2018</b> Purple dianthus     |
| <b>1995</b> Nikolaia elatior (torch ginger) |                                 |
| <b>1996</b> Mathiola                        |                                 |
| <b>1997</b> Hanging elk “balcony fire”      |                                 |
| <b>1998</b> Papaver nudicaule               |                                 |
| <b>1999</b> Zantedeschia                    |                                 |
| <b>2000</b> Hippeastrum                     |                                 |
| <b>2001</b> Shamrock chrysanthemum          |                                 |
| <b>2002</b> Vanda orchid                    |                                 |
| <b>2003</b> Curcuma longa                   |                                 |